



MOUNTAIN RESORT

CONFERENCE CENTRE INFORMATION PACKAGE



MEETINGS • SEMINARS • RETREATS • CONFERENCES • TRAINING SESSIONS

TABLE OF CONTENTS

1. INTRODUCTION	PAGE 2
2. FUNCTION ROOMS	PAGE 3
3. CONFERENCE ROOM SET-UP STYLES	PAGE 8
4. FOOD & BEVERAGE MENUS AND COSTS	PAGE 10
5. ACCOMMODATIONS	PAGE 15
6. LOCAL ATTRACTIONS	PAGE 16
7. TRANSPORTATION	PAGE 18
8. POLICIES & PROCEDURES	PAGE 19

RED Mountain has a long history of skiing and racing in Canada and was the birth place of skiing in Western Canada. It is home to the first Canadian downhill ski championship in 1897. Voted as Canada's #1 outdoor town by Explore Magazine, Rossland is widely renowned for its rugged outdoor adventure, small-town warmth and hospitality. A real community, Rossland is known for its historical ambiance amidst a new energy of events, festivals and nightlife.

WHERE IS RED?

RED Mountain is easily accessed from major airports in both Canada & the U.S.A

- 10 minute drive north of the Canada-USA Border
- 2.5 hour drive from Spokane International Airport (Washington State)
- 30 minute drive from Kootenay Regional Airport, which is serviced by Air Canada
- 3.5 hour drive from Kelowna International Airport
- 3 hour drive from Canadian Rockies (Cranbrook) International Airport
- 20 minute drive from Trail Airport; serviced by Pacific Coastal Airlines

WHY RED?

- The true BC mountain adventure
- Friendly staff & locals
- Unique authentic experience
- Real historic community
- Epic terrain for all abilities
- World class accommodation
- Relaxed, casual setting
- Year round adventure



2

FUNCTION ROOMS

Conference Centre: The newly constructed Conference Centre delivers a breath taking view of both Red and Granite Mountain. This room has a capacity of 120 people and is ideal for board meetings and presentations and offers a modern facility uniquely blended with our historic resort. Combined with several other break-out or meeting spaces in the Red Day Lodge, our facility is ideal for conferences and multi-day group meetings and learning retreats.

Sourdough: With a capacity of up to 200 people Sourdough is ideal for large groups and can be combined with the Conference Center to either host an even larger event or can be used as a “breakout room”.

Rafters: Rafters has a long and intriguing history of entertaining so many of our Rossland visitors over the last century. This room is ideal for receptions, late night parties and can be used as a break-out meeting room. Rafters can accommodate up to a 240 person reception.

Sourdough Patio: Why stay inside when you can enjoy your function while breathing the fresh mountain air in the warmth of the afternoon sun! Ideal for cocktails & bbq’s. The deck has a capacity of 190.

Pricing	Full Day (8 hrs)	Half Day (4 hrs)	Hourly (min 2)
Conference Centre	\$429.00	\$329.00	\$99.00
Sourdough	\$429.00	\$329.00	
Conference Centre, Sourdough, & Patio	\$629.00	\$529.00	
Rafter's (off-season) <i>Winter season inquire for rates and minimums</i>	\$399.00	\$299.00	
All meeting rooms in the base lodge	\$929.00	\$529.00	
Patio only	\$499.00	\$299.00	



2

FUNCTION ROOMS CONFERENCE CENTRE



2

FUNCTION ROOMS SOURDOUGH



2

FUNCTION ROOMS RAFTERS



2

FUNCTION ROOMS SOURDOUGH PATIO



With a wide selection of function rooms and technical services we are able to customize your event based on your set up needs.

Meeting Set-Up Styles:

- **Theatre:** Just like a movie theatre, this set up is ideal for presentations and allows for maximum seating.
- **Boardroom:** Intimate business atmosphere that promotes interaction amongst participants.
- **Hollow Square:** Similar to the "Boardroom Style" ideal for larger numbers while keeping the more intimate atmosphere and eye-to-eye contact.
- **Classroom:** Perfect for teaching and taking notes, it's school like you wanted it to be.
- **Herring Bone:** Similar to "Theatre Style" that promotes a more intimate atmosphere without anyone feeling that they are in the "back of the classroom".

Rooming Capacity Chart: (Measured in maximum number of people)

	Theatre	Boardroom	Hollow Square	Classroom	Herring Bone	Standing Reception
Conference Centre	120	45	60	40	30	120
Sourdough	150	45	60	60	30	200
Sourdough Patio	190	n/a	n/a	n/a	n/a	190
Rafters	n/a	n/a	n/a	n/a	n/a	240

If there is another style of set-up that is not mentioned here, then please let us know and we will do our best to accommodate.

Our tables are 30X60 and include appropriate table linens & napkins for events.

**Should you require round tables, we can arrange for rentals.

**Quoted Case by Case

Incidental Pricing Cost List

Primary Event Tools:

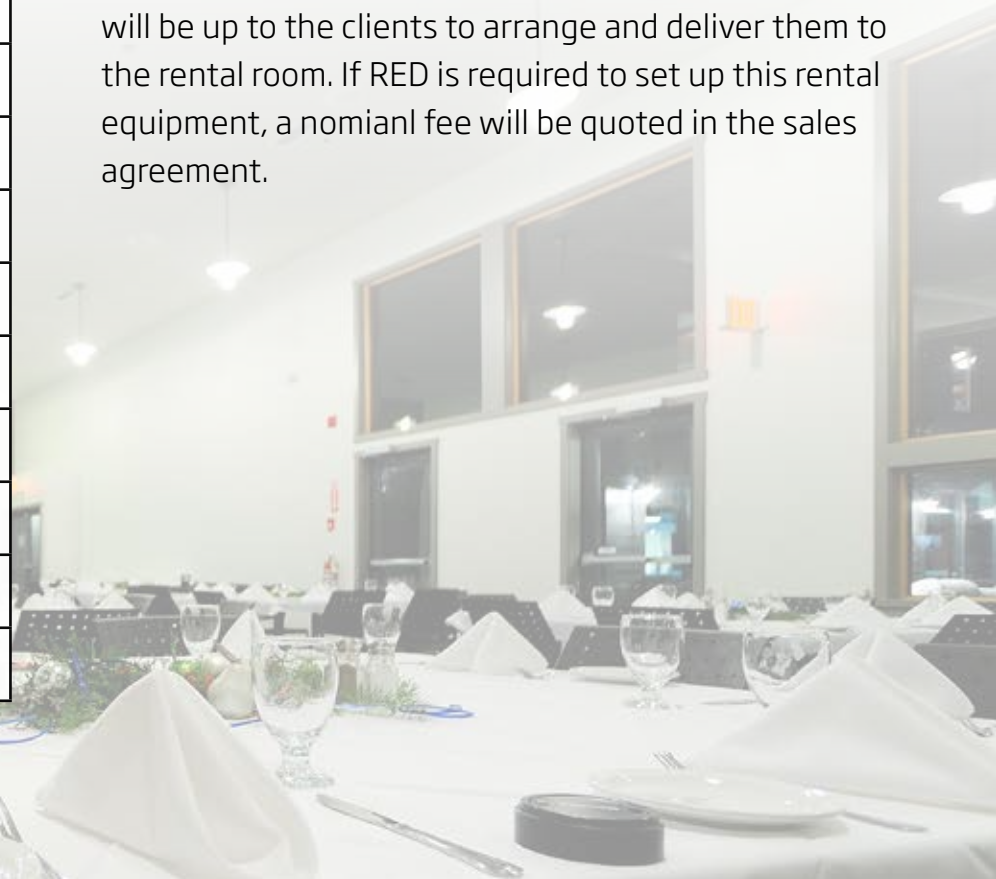
Item	Rental Cost Per Day
42" Flat Screen	\$50
Portable TV Stand	Included
Projector Screen	\$10
Projector	\$75
Microphone & Speaker	\$50
Podium	\$10
Patio Lighting	\$125
DVD Player	\$50
Easel	\$20
Internal Sound System	Included
Portable Banquet Tables	\$7 each
Folding Chairs	\$2.50 each
Telus Line Set Up	\$100

All prices above are subject to change
Should you require additional AV services, a surcharge may apply

Specialty Equipment Needs & Event Vendors

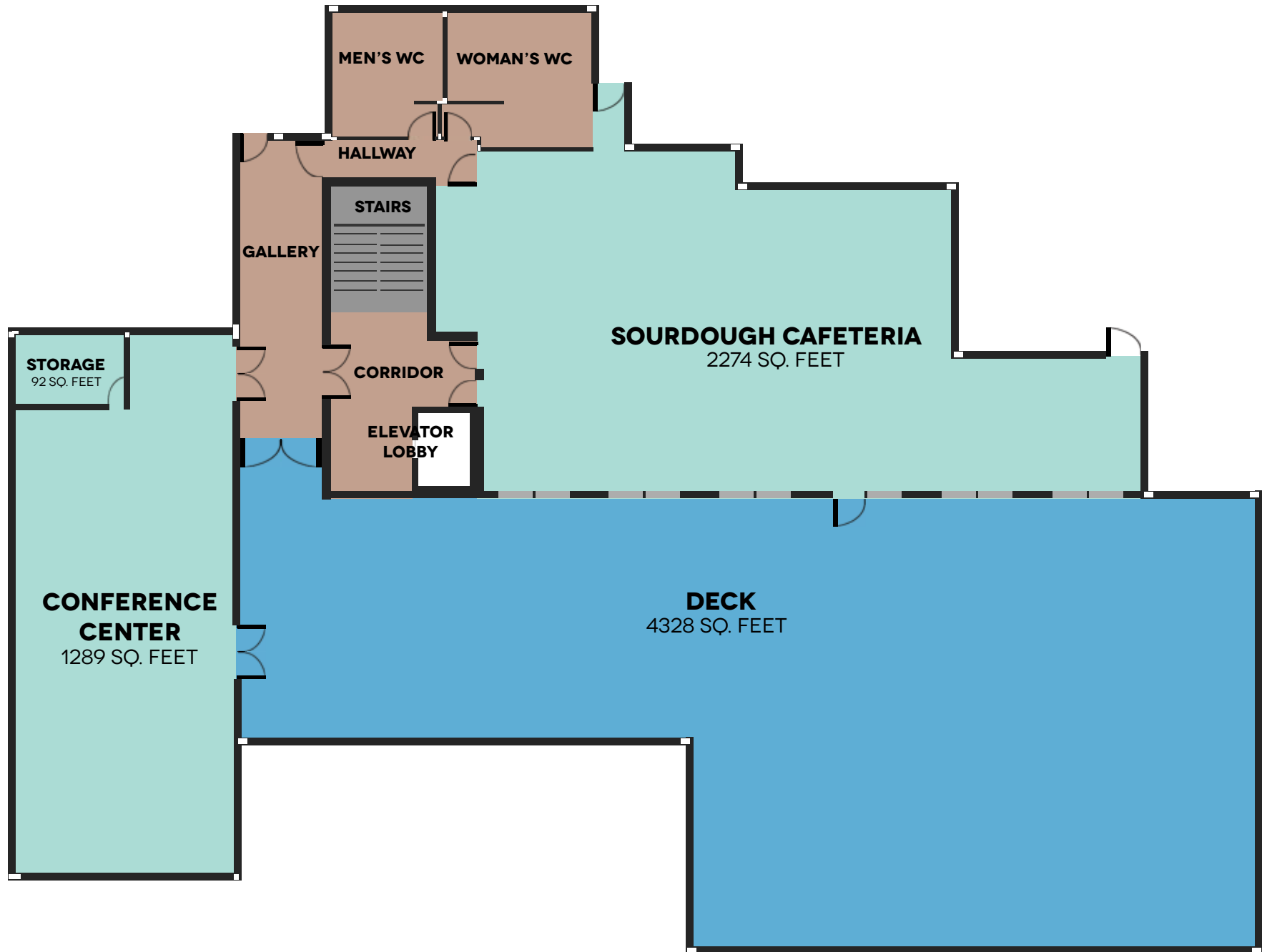
Red Mountain is the ideal location to host your event. We have an extensive list of local vendors such as audio visual, rental & décor specialists available for referral.

Any chair or table rentals outside of Red's inventory will be up to the clients to arrange and deliver them to the rental room. If RED is required to set up this rental equipment, a nominal fee will be quoted in the sales agreement.



3

CONFERENCE ROOM LAYOUT



4

FOOD & BEVERAGE MENUS

Breakfast

Option 1: "Powder Fields Perk Up"

Coffee, De-caffeinated, selection of Teas
\$6 per person

Option 2 - "First Chair"

Coffee, De-caffeinated, selection of Teas, Orange and Apple Juice
Baked goods, fruit, yoghurt, selection of cereals
\$16 per person

Option 3 - "The Motherlode"

Coffee, De-caffeinated, selection of Teas, Orange and Apple Juice
Choose one of the following:

1. Breakfast wraps with eggs, sausage, peppers, mixed cheese and fresh salsa.
2. French toast with berry compote or syrup with breakfast sausages and bacon.
3. Pancakes with berry compote or syrup with breakfast sausages and bacon.
4. Bacon/ Sausage, Scrambled Eggs, Toast and Hash Browns

\$17 per person

Lunch

Option 1 - "Steep & Deep Sandwich Buffet"

Assorted cold cuts and cheeses, artisan bread,
lettuce, tomato, onion, condiments
Served with home-made soup and salad
\$17 per person

Option 3 - "Southern Comfort"

Hamburgers, veggie burgers, hot dogs, smokies, Caesar or
mixed green salad, cheese, lettuce, tomato, onion, condiments.
\$19 per person

Option 2 - "Mexico in the Monashee's"

Taco buffet, spicy ground beef, refried beans, shredded cheese,
lettuce, tomato, onion, salsa, sour cream, guacamole, and mexi-rice
Caesar or mixed green salad.
\$16 per person

Option 4 - "Pizza and Greens"

Assorted meat and veggie pizzas, served with choice of caesar salad
or mixed greens
\$18 per person

*Minimum 25 guests required on breakfast and lunch service
15% Gratuity will be applied to all food and beverage*

4

FOOD & BEVERAGE MENUS

Breaks *(served am or pm)*

Option 1 - "Powder Fields Perk Up"

Coffee, De-cafeinated, selection of Teas

\$6 per person

Option 3 - "7 Summits"

Coffee, de-caf, assorted teas, orange and apple juice

Assortment of muffins or cookies

Assortment of fresh fruit slices

Vegetable mix

\$12 per person

Option 2 - "Bootys Break"

Coffee, de-caf, assorted teas, orange and apple juice

Assortment of muffins or cookies

\$10 per person

Option 4 - "The Gold Mine"

Coffee, de-caf, assorted teas, orange and apple juice & assorted pop

Assortment of Naughty treats (chefs choice)

May include rice crispy squares, freshly baked cookies, squares & tarts

\$14 per person

Dinner

Option 1 - "Little Italy"

Choose one of the following:

1. Spaghetti Bolognese
2. Lasagna (meat or veg, choose one)
3. House Made Macaroni and Cheese
4. Chicken or Prawn Alfredo
5. Chicken or Prawn Pesto

Caesar or mixed green salad with vinaigrette & garlic toast

Assorted desserts

Coffee, De-cafeinated, selection of Teas

\$24 per person

Option 2 - "Grey Mountain Grilled Chicken"

Grilled chicken breast with mango salsa, roast potatoes, seasonal vegetables

Caesar or mixed green salad with vinaigrette

Rolls and butter

Assorted desserts

Coffee, De-cafeinated, selection of Teas

\$27 per person

Dinner (cont'd)**Option 3 - "Mt. Roberts Roast Beef"**

Roast beef, gravy & horseradish

Chef's potato, seasonal vegetables.

Caesar or mixed green salad with vinaigrette

Rolls and butter

Assorted desserts

Coffee, De-cafeinated, selection of Teas

\$32 per person

Option 5 - "Holy Guacamole!"

Chorizo sausage, black bean, corn & butternut squash
enchiladas. Served with refried beans, rice and caesar salad.

Salsa, sour cream & guacamole

Assorted desserts

\$26 per person

Option 7 - "OPA!"

Chicken souvlaki & spanakopita

Served with lemon oregano roasted potatoes, greek salad,

fresh pita, hummus & tzatziki

Assorted desserts

\$27 per person

\$3 Add Calamari

Option 4 - "West Coast Salmon"

Grilled salmon with lemon tarragon sauce, basmati rice,
sautéed seasonal vegetables.

Caesar or mixed green salad with vinaigrette,

Rolls and butter

Assorted desserts

Coffee, De-cafeinated, selection of Teas

\$33 per person

Option 6 - "Old Glory Butter Chicken"

Creamy butter chicken

Served with jasmine rice, warm naan bread, veggie samossas,
mixed greens & raita yoghurt sauce

Assorted desserts

\$26 per person

Option 8 - "Jumbo Gully Ginger Beef"

Ginger beef, stir-fried vegetables, rice and egg rolls.

Served with mixed greens with sesame vinaigrette.

Assorted desserts

\$27 per person

\$3 Add Vegetable Chow Mein

Dinner (cont'd)

Option 9 - "Mt. Kirkup Chicken & Ribs"

Chicken and bbq ribs

Served with seasonal vegetables, lemon oregano roasted potatoes, and caesar salad.

Assorted desserts

\$29 per person

Option 10 - "Pizza and Greens"

Assorted artisan veggie and meat pizza buffet

Served with caesar salad or mixed greens.

Assorted desserts

\$18 per person

Special Dietary or Allergy Restrictions? Just let us know and we can review our options to meet these special needs. Minimum 25 guests required on dinner service. Craving something that is not on our menu, let us know and we'll do our best to create your request! 15% Gratuity will be applied to all food and beverage.

Cocktail Receptions

Priced accordingly for those wanting a Cocktail Reception and not a sit down meal

Option 1 - "Aprés"

Vegetable Platter with dips,

Assorted pickle tray

Fresh fruit platter

Assorted cold cuts

Specialty cheese platter, crackers and assorted breads

\$13 per person

Option 2 - "Canapés"

Fresh tomato & basil bruschetta on baked crostini

Spanikopita with feta, spinach and garlic baked in filo pastry

Quiche (bite sized assorted)

Mini quesadilla with Monterey Jack cheese, salsa and sour cream garnish

\$15 per person

Beverage Charge Options:

Host Bar: The event host will be responsible for payment of all beverage consumption

Cash Bar: Individual guests are responsible for payment of their own beverage consumption

Drink Tickets: The event host will cover the cost of limited number of beverage tickets handed out to their guests.

Beverage	Host Bar	Cash Bar
Domestic Beer	\$5.25	\$6.00
Import Beer	\$6.50	\$7.00
Single standard highballs	\$5.25	\$6.00
Double standard highballs	\$7.25	\$7.75
House red or white(Glass)	\$6.50	\$7.25
House red or white (Bottle)	\$29.00	\$32.00
Assorted Soft Drinks	\$2.75	\$2.75
Assorted Bottle Juices	\$2.75	\$2.75

We have an excellent selection of premium liquor, liqueurs and wines by the bottle for your function. Please ask for any special selections and we will do our best to bring in the beverage of your choice.

Prices do not include GST (5%) or PST (10%) or 15% Gratuity.

5

ACCOMMODATIONS

Red Mountain Resort Lodging offers an impressive portfolio of luxury condos that will meet all your requirements for your get-away. Our accommodations range from stylish one bedroom to spacious five bedroom condos, chalets and town homes. All units are beautifully furnished and outfitted to provide guests with the ultimate in comfort and luxury. Our rental accommodations are located at the base of Red Mountain Resort.

Property Features:

- Private and shared hot tubs
- Gas fireplaces
- Hardwood & Slate flooring
- Fully equipped gourmet kitchens
- Ensuite in the master bedroom
- Washer and Dryer
- Wireless internet
- Indoor Parking



Why not mix a little business with pleasure? There are no shortages of exciting activities and events that can be incorporated during your visit. Below is just a sample of activities and adventures Rossland and RED has to offer.

Alpine Skiing & Snowboarding: RED Mountain truly offers something for everyone. At RED, visitors can choose from 110 runs spread across three stellar mountains that feature everything from wide-open groomers to steep, powder-filled glades. With more than 2,682 skiable acres and 880 meters (2,919 feet) of vertical terrain serviced by 7 lifts, there's a lot to explore at RED. Known for some of the best trees, steeps and powder in Canada, this hidden jewel is not to be missed, and you will soon learn why so many have fallen in love with RED. www.redresort.com | 1.877.969.7669.



GET LOST Adventure Centre: Rossland, BC is your gateway to adventure and GET LOST will help you find your way to our finest recreational opportunities. Open year-round, GET LOST is purpose-built for getting folks off their phones and out into an adventure they'll remember for life, whether that involves a first time cross country tour or pedaling a fat bike in the snow.

P. 778.457.5001

Email: getlost@redresort.com



Guided Fishing Tours: Catch the big one! Knowledge is power, and our guides are the best in the business, with years of experience catching Rainbow and Walleye Columbia River, Arrow Lakes & Kootenay Lake.

Hiking and Mountaineering: Hike or climb with our professional mountain guides and get ready to view the most incredible scenery you will ever see. Get that next selfie ready.

Cat Skiing: Here it's all about the powder! Experience some of the best tree skiing and glades in the world, then hop right back in the cat for a ride back up to the top of the mountain to do it all again.

Tandem Paragliding: Available in both the summer and winter. Get started on your flying adventure. With options from hike-and-fly, drive-and-fly, or ski-and-fly there is something for anyone with the desire to soar like a bird.

Bike Rentals: Rent a mountain bike in the summer or a fat bike in the winter and get your pedal on and take on some of the most exciting trails in the kootenays.

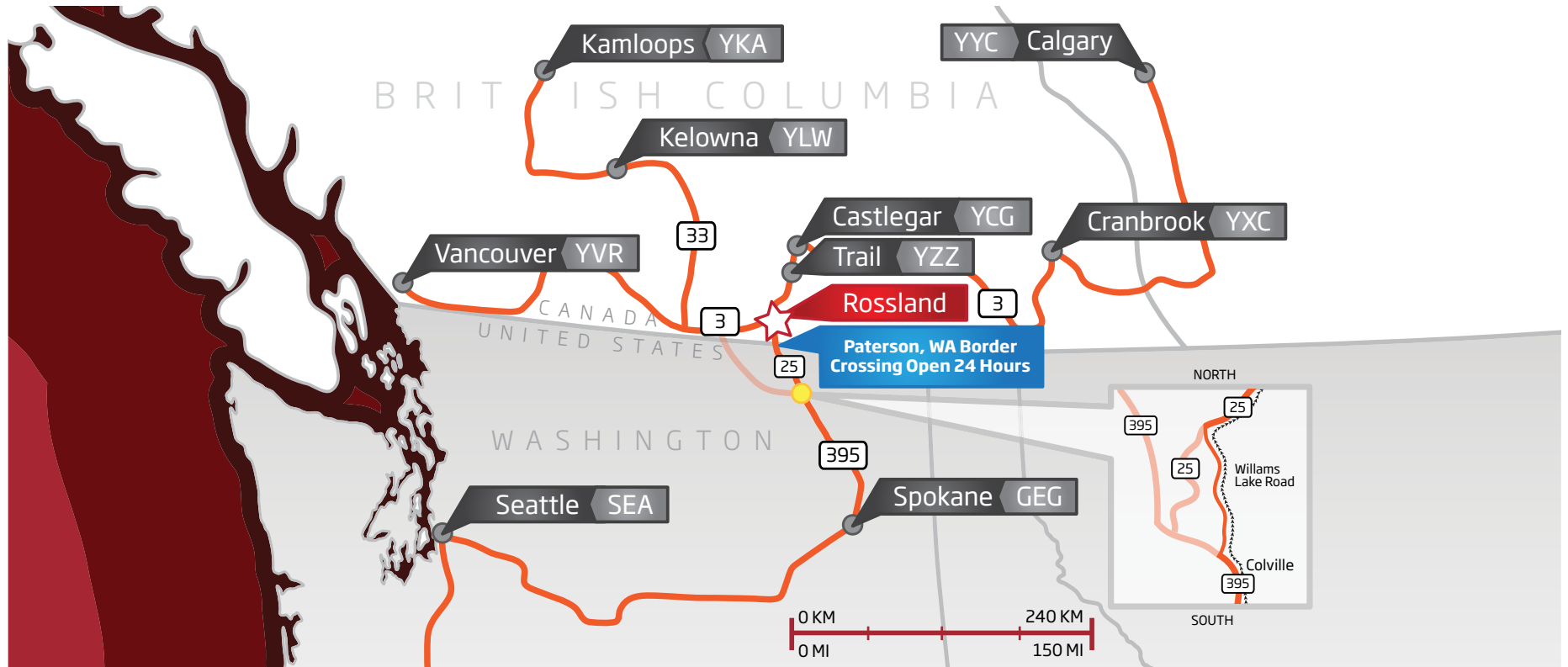
Snowshoe Tours: Take a stroll through our winter wonderland with our professional guides that will show you the best trails and secret snow stashes that could otherwise take years to discover!

Whitewater Rafting: Take a stroll through our winter wonderland with our professional guides that will show you the best trails and secret snow stashes that could otherwise take years to discover!



7

TRANSPORTATION



There are many options on how to get to Red Mountain. Below is a list of companies who will help make sure your travel here is a smooth process from all our surrounding airports.

Queen City Shuttle & Charters	250-352-9829 info@kootenayshuttle.com	1-24 people
Rossland's Mountain Shuttle	250-231-4305	12 people

All airports have car rental and taxi services. Please refer to the following airport links for further details:

Spokane, WA: <http://spokaneairports.net/>

Kelowna, BC: <http://www.kelowna.ca/cm/page68.aspx/>

Castlegar, BC: <http://www.wkairport.ca/>

Trail, BC: <http://www.trailairport.ca/>

Cranbrook, BC: <http://www.flycanadianrockies.com/>

Calgary, AB: <http://yyc.com/>

Vancouver, BC: www.yvr.ca

Calgary, AB: <http://yyc.com/>

Deposit:

A credit card deposit will be taken at time of booking with the remainder due 30 days prior to your event. Amount based on event size and cost.

Security:

If you are requiring special Security for your event, then please contact Selkirk Security at 1-877-372-1864.

Smoking:

Smoking is prohibited by law in all public areas and Red Mountain is proud to provide a smoke free environment, except for designated smoking areas.

Shipments:

If you are requiring to ship or send materials ahead of time, please make arrangements during the booking process and have all items shipped to: 4300 Red Mountain Road, Box 670, Rossland BC, V0G 1Y0

Damages:

Each group will be responsible to cover the costs of any damage that has been made by their group.

Booking Contact:

Red Mountain Resort
1-800-663-0105 or 250.362.7384 Ext: 203
Ivor Smith, Director Of Food, Beverage and Conference Sales
conferences@redresort.com or call 250.362.7384 x203

Lodging Contact:

Red Mountain Resort Lodging
1-877-969-7669 or 250-362-5553
Jane Paterson, Lodging Manager
lodging@redresort.com

RED

MOUNTAIN RESORT
ROSSLAND, B.C. | www.redresort.com

**CANADA'S
HOTTEST
SKI RESORT**
THE TELEGRAPH, UK
MAR 2014

**RANKED 8TH
BEST PLACE
IN THE WORLD
TO VISIT IN 2013**
THE
NEW YORK TIMES
DEC 2012

**VOTED #1
SKI TOWN
IN N. AMERICA**
POWDER MAG'S
SKI TOWN THROWDOWN
DEC 2012

**MOST
IMPROVED
NORTH AMERICAN
RESORT**
2013 WORLD
SNOW AWARDS

**GUEST RATED
4.5/5 STARS
ON TRIPADVISOR**
RATING ON
TRIPADVISOR.COM

**#2 BEST
TREE SKIING
IN THE WORLD**
UNOFFICIAL
NETWORKS.COM
OCT 2015

**BEST
UPCOMING
SKI RESORT**
2013 WORLD
SNOW AWARDS

**MOST
UNDERRATED
SKI RESORT**
SKIING MAGAZINE
NOV 2012

